



**SCOTTISHPOWER
RENEWABLES**



East Anglia TWO Offshore Windfarm

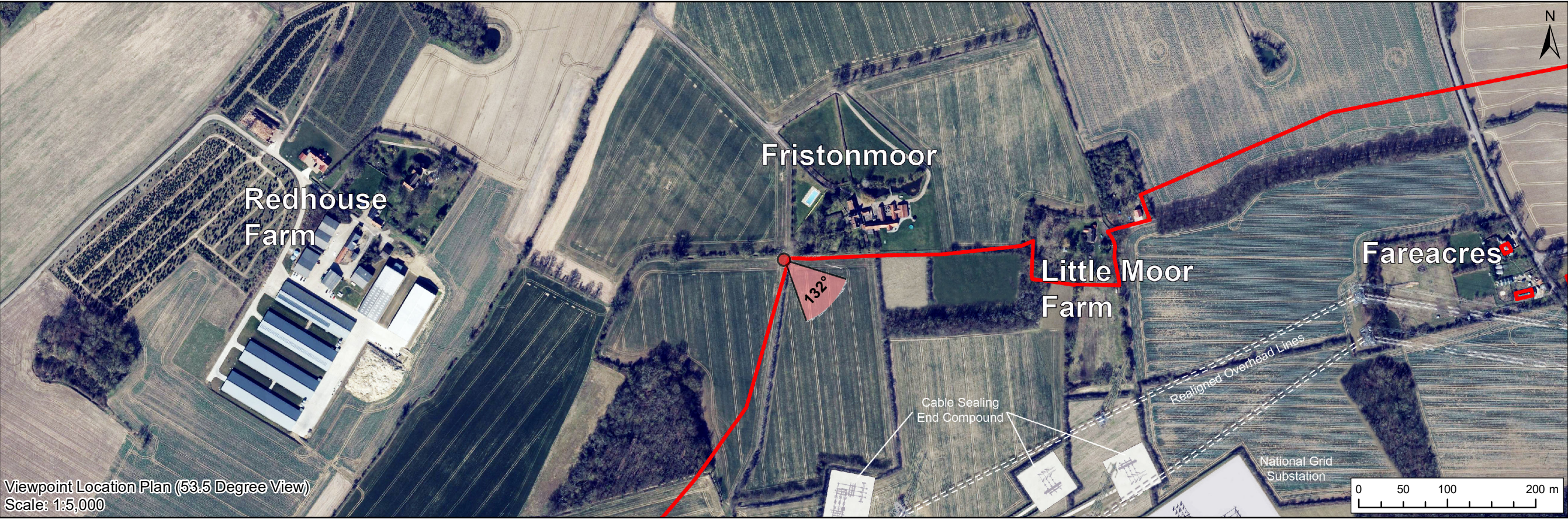
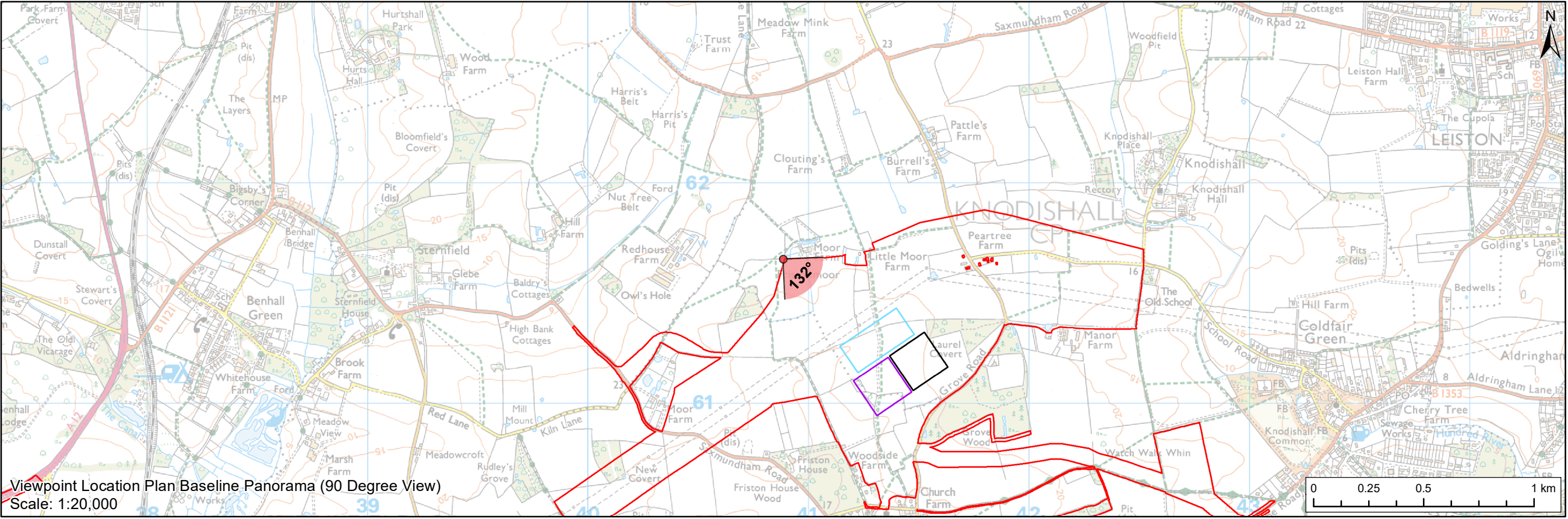
Applicants' Responses to Examining Authority's Written Questions

Appendix 9.11 EA2 Annotated Viewpoint 5

Applicants: East Anglia TWO Limited
Document Reference: ExA.WQ-1.A9.D1.V1
SPR Reference: EA1N_EA2-DWF-ENV-REP-IBR-001085_009

Date: 2nd November 2020
Revision: Version 01
Author: Royal HaskoningDHV

Applicable to East Anglia TWO



Legend

- Proposed Onshore Development Area
- Indicative East Anglia TWO Substation Location
- Indicative East Anglia ONE North Substation Location
- Indicative National Grid AIS Substation Location

Viewpoint:

- 90 Degree Field of View Viewpoint
- 53.5 Degree Field of View Viewpoint



	5	29/08/2019	LA	Fifth Issue (OPEN)			Scale @ A3	<div>East Anglia TWO with National Grid AIS Substation</div> <div>Viewpoint 5: Public Right of Way, near Moor Farm</div>	Drg No	EA2-DWF-ENV-REP-IBR-000921	
	4	15/08/2019	LA	Fourth Issue (OPEN)	Prepared:	LA			Rev	5	Coordinate System: BNG Datum: OSGB36
	3	25/07/2019	LA	Third Issue (OPEN)	Checked:	SM			Date	29/08/19	
	Rev	Date	By	Comment	Approved:	LT			Figure	29.17a	
	<div>Source: © Crown copyright and database rights 2019. Ordnance Survey 100031872. This map has been produced to the latest known information at the time of issue, and has been produced for your information only. Please consult with the SPP Onshore GIS team to ensure the content is still current before using the information contained on this map. To the fullest extent permitted by law, we accept no responsibility or liability (whether in contract, tort (including negligence) or otherwise) in respect of any errors or omissions in the information contained in the map and shall not be liable for any loss, damage or expense caused by such errors or omissions.</div>										



Visual representation of 1st year of operational phase
Photomontage of the proposed East Anglia TWO and National Grid AIS Substation

View flat at a comfortable arm's length

OS reference:	640884 E 261654 N	Horizontal field of view:	53.5° (planar projection)	Camera:	Canon EOS 5D Mark II
Eye level:	25 m AOD	Principal viewing distance:	812.5 mm	Lens:	50mm (Canon EF 50mm f/1.4)
Direction of view:	132°	Paper size:	841 x 297 mm (half A1)	Camera height:	1.5 m AGL
		Correct printed image size:	820 x 260 mm	Date and time:	22/02/2019, 13:47:28

Contains Ordnance Survey digital data © Crown copyright, All rights reserved 2019 Licence number 0100031673

Figure: 29.17b
Viewpoint 5: Public Right of Way, near Moor Farm



Visual representation of 15th year of operational phase
Photomontage of the proposed East Anglia TWO and National Grid AIS Substation

View flat at a comfortable arm's length

OS reference:	640884 E 261654 N	Horizontal field of view:	53.5° (planar projection)	Camera:	Canon EOS 5D Mark II
Eye level:	25 m AOD	Principal viewing distance:	812.5 mm	Lens:	50mm (Canon EF 50mm f/1.4)
Direction of view:	132°	Paper size:	841 x 297 mm (half A1)	Camera height:	1.5 m AGL
		Correct printed image size:	820 x 260 mm	Date and time:	22/02/2019, 13:47:28

Contains Ordnance Survey digital data © Crown copyright, All rights reserved 2019 Licence number 0100031673

Figure: 29.17c
Viewpoint 5: Public Right of Way, near Moor Farm



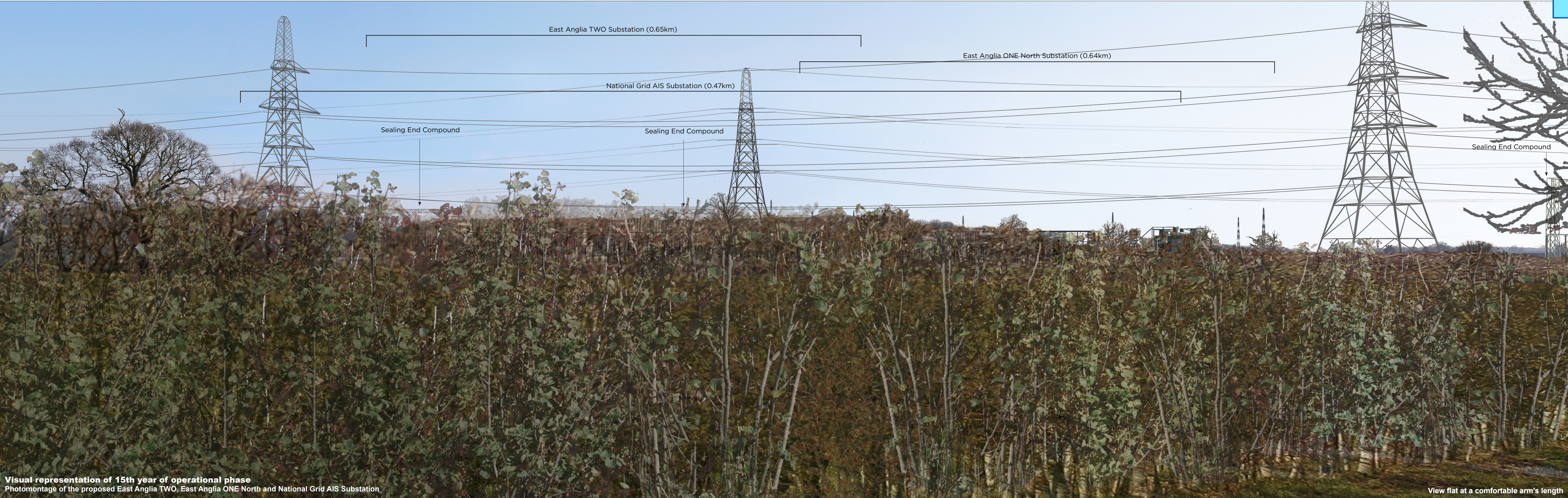
Visual representation of 1st year of operational phase
Photomontage of the proposed East Anglia TWO, East Anglia ONE North and National Grid AIS Substation

View flat at a comfortable arm's length

OS reference:	640884 E 261654 N	Horizontal field of view:	53.5° (planar projection)	Camera:	Canon EOS 5D Mark II
Eye level:	25 m AOD	Principal viewing distance:	812.5 mm	Lens:	50mm (Canon EF 50mm f/1.4)
Direction of view:	132°	Paper size:	841 x 297 mm (half A1)	Camera height:	1.5 m AGL
		Correct printed image size:	820 x 260 mm	Date and time:	22/02/2019, 13:47:28

Contains Ordnance Survey digital data © Crown copyright, All rights reserved 2019 Licence number 0100031673

Figure: 29.17d
Viewpoint 5: Public Right of Way, near Moor Farm



Visual representation of 15th year of operational phase
Photomontage of the proposed East Anglia TWO, East Anglia ONE North and National Grid AIS Substation

View flat at a comfortable arm's length

OS reference:	640884 E 261654 N	Horizontal field of view:	53.5° (planar projection)	Camera:	Canon EOS 5D Mark II
Eye level:	25 m AOD	Principal viewing distance:	812.5 mm	Lens:	50mm (Canon EF 50mm f/1.4)
Direction of view:	132°	Paper size:	841 x 297 mm (half A1)	Camera height:	1.5 m AGL
		Correct printed image size:	820 x 260 mm	Date and time:	22/02/2019, 13:47:28

Contains Ordnance Survey digital data © Crown copyright, All rights reserved 2019 Licence number 0100031673

Figure: 29.17e
Viewpoint 5: Public Right of Way, near Moor Farm